

**FINAL PLAT OF
HIGH MEADOWS ESTATES PHASE I
PLAT 2 OF 2**

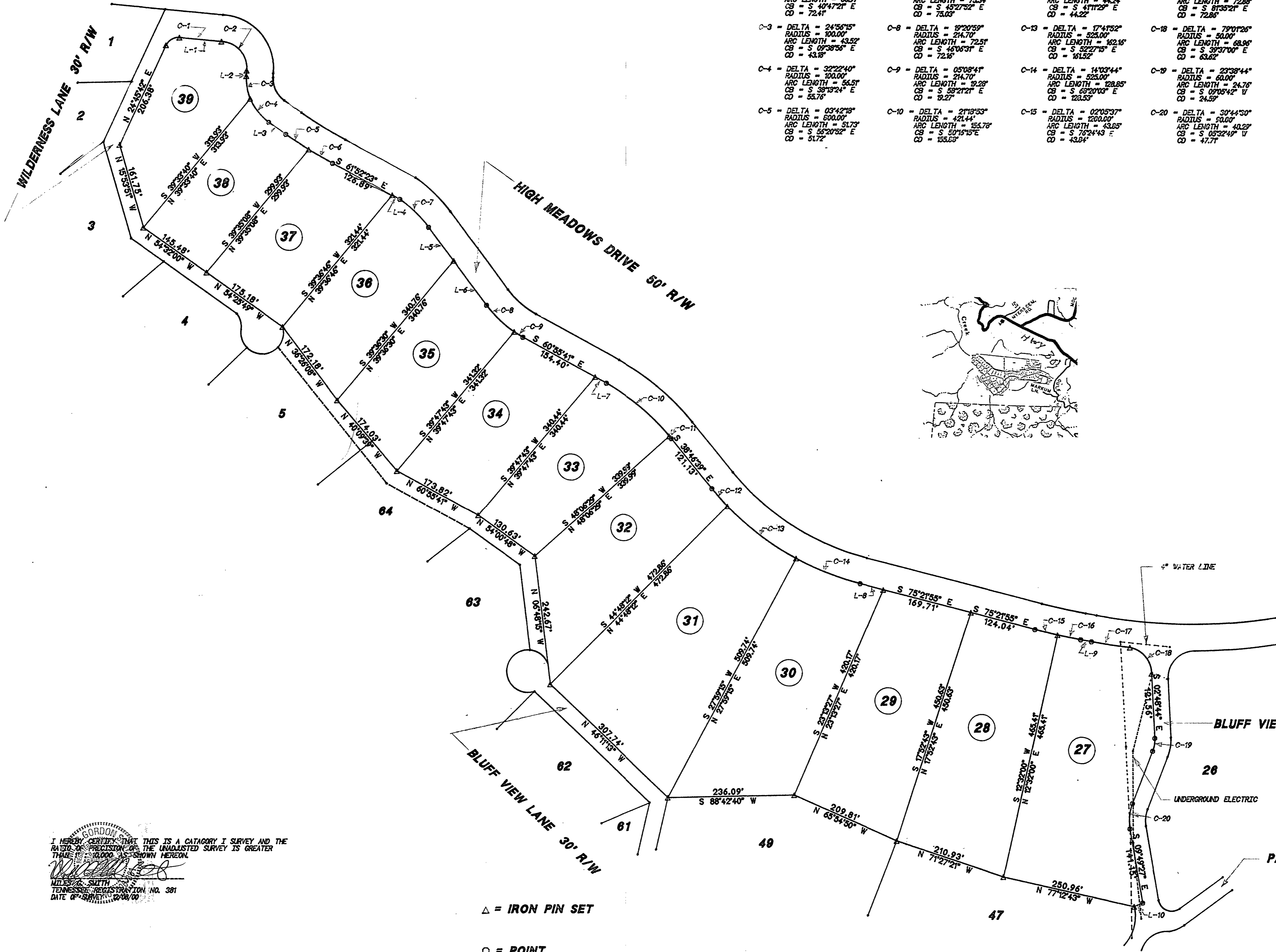
LINE DATA

- L-1 = S84°23'53"E 79.01'
- L-2 = S02°49'11"W 10.27'
- L-3 = S54°29'44"E 39.37'
- L-4 = S61°52'23"E 16.23'
- L-5 = S36°26'01"E 78.74'
- L-6 = S36°26'01"E 103.47'
- L-7 = S60°55'41"E 24.04'
- L-8 = S75°21'55"E 44.50'
- L-9 = S79°33'08"E 20.45'
- L-10 = S66°26'14"W 17.31'

CURVE DATA

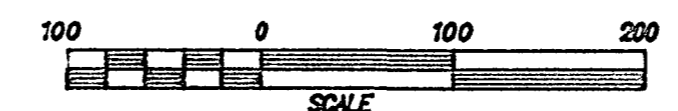
- C-1 - DELTA = 70°50'25"
RADIUS = 25.00'
ARC LENGTH = 30.91'
CB = N 67°10'54" E
CD = 28.99'
- C-2 - DELTA = 92°46'55"
RADIUS = 50.00'
ARC LENGTH = 80.97'
CB = S 40°47'21" E
CD = 72.41'
- C-3 - DELTA = 24°56'15"
RADIUS = 100.00'
ARC LENGTH = 43.52'
CB = S 09°38'56" E
CD = 43.18'
- C-4 - DELTA = 32°22'40"
RADIUS = 100.00'
ARC LENGTH = 56.57'
CB = S 39°10'24" E
CD = 55.76'
- C-5 - DELTA = 03°42'19"
RADIUS = 600.00'
ARC LENGTH = 51.73'
CB = S 55°20'32" E
CD = 51.72'
- C-6 - DELTA = 03°42'21"
RADIUS = 800.00'
ARC LENGTH = 51.28'
CB = S 60°02'12" E
CD = 51.27'
- C-7 - DELTA = 19°03'42"
RADIUS = 225.00'
ARC LENGTH = 75.34'
CB = S 45°27'52" E
CD = 73.05'
- C-8 - DELTA = 19°20'59"
RADIUS = 214.70'
ARC LENGTH = 72.57'
CB = S 46°05'31" E
CD = 72.16'
- C-9 - DELTA = 05°08'41"
RADIUS = 214.70'
ARC LENGTH = 39.29'
CB = S 53°21'21" E
CD = 39.27'
- C-10 - DELTA = 21°19'33"
RADIUS = 424.44'
ARC LENGTH = 155.78'
CB = S 50°19'15" E
CD = 155.63'
- C-11 - DELTA = 00°59'09"
RADIUS = 421.44'
ARC LENGTH = 6.15'
CB = S 37°11'44" E
CD = 6.15'
- C-12 - DELTA = 04°49'40"
RADIUS = 325.00'
ARC LENGTH = 44.24'
CB = S 41°11'25" E
CD = 44.22'
- C-13 - DELTA = 17°41'52"
RADIUS = 325.00'
ARC LENGTH = 162.16'
CB = S 09°27'15" E
CD = 161.52'
- C-14 - DELTA = 14°03'44"
RADIUS = 325.00'
ARC LENGTH = 128.85'
CB = S 09°20'05" E
CD = 128.53'
- C-15 - DELTA = 02°05'37"
RADIUS = 1200.00'
ARC LENGTH = 43.65'
CB = S 76°24'43" E
CD = 43.64'
- C-16 - DELTA = 02°05'37"
RADIUS = 1200.00'
ARC LENGTH = 43.65'
CB = S 78°30'20" E
CD = 43.64'
- C-17 - DELTA = 04°04'26"
RADIUS = 1025.00'
ARC LENGTH = 72.88'
CB = S 81°35'21" E
CD = 72.85'
- C-18 - DELTA = 79°01'26"
RADIUS = 50.00'
ARC LENGTH = 58.96'
CB = S 39°37'05" E
CD = 63.62'
- C-19 - DELTA = 22°39'44"
RADIUS = 60.00'
ARC LENGTH = 24.76'
CB = S 09°05'42" W
CD = 24.57'
- C-20 - DELTA = 30°44'30"
RADIUS = 50.00'
ARC LENGTH = 40.29'
CB = S 05°32'49" W
CD = 47.77'

- TRACT 27 = 2.32 ACRES
- TRACT 28 = 1.98 ACRES
- TRACT 29 = 1.89 ACRES
- TRACT 30 = 2.02 ACRES
- TRACT 31 = 2.58 ACRES
- TRACT 32 = 1.70 ACRES
- TRACT 33 = 1.22 ACRES
- TRACT 34 = 1.33 ACRES
- TRACT 35 = 1.33 ACRES
- TRACT 36 = 1.29 ACRES
- TRACT 37 = 1.24 ACRES
- TRACT 38 = 1.00 ACRES
- TRACT 39 = 1.10 ACRES



I HEREBY CERTIFY THAT THIS IS A CATEGORY I SURVEY AND THE
RATIO OF PRECISION OF THE UNADJUSTED SURVEY IS GREATER
THAN 1 TO 10,000 AS SHOWN HEREON.
Miles G. Smith
MILES G. SMITH
TENNESSEE REGISTRATION NO. 381
DATE OF SURVEY 12/08/00

△ = IRON PIN SET
○ = POINT
WOOD STAKES AT ALL CORNERS



VAN BUREN COUNTY, TENNESSEE
Receipt # 140096
10:22 AM, On September 4, 2002
Recorded in Book CAB1 Pages 111 - 111
State Tax \$ 0.00 Register \$ 0.00
Recordings \$ 15.00 OFFEE \$ 2.00
TOTAL RECORDING AMOUNT \$ 17.00
Register Of Deeds : LINDA SIMMONS

Inst # 2002232501-LR year: 2002
Book CAB1 Page 111

M & J SURVEYS P.O. BOX 392 WINCHESTER, TN 37398 - PHONE 901-957-0070

SURVEYED FOR: HIGHLAND RESORTS ENTERPRISES	
SCALE: 1" = 100'	APPROVED BY: MILES G. SMITH
DATE: 12/08/00	REVISIONS:
DEED REF. BOOK 9 PAGE 482	
CIVIL DIST. 3RD OF VAN BUREN CO. TN.	
SURVEYED BY M & J SURVEYS MILES G. SMITH & JAMES GRUBBS	